

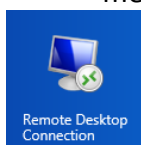


## Remote Terminal Server for Windows and Mac Users

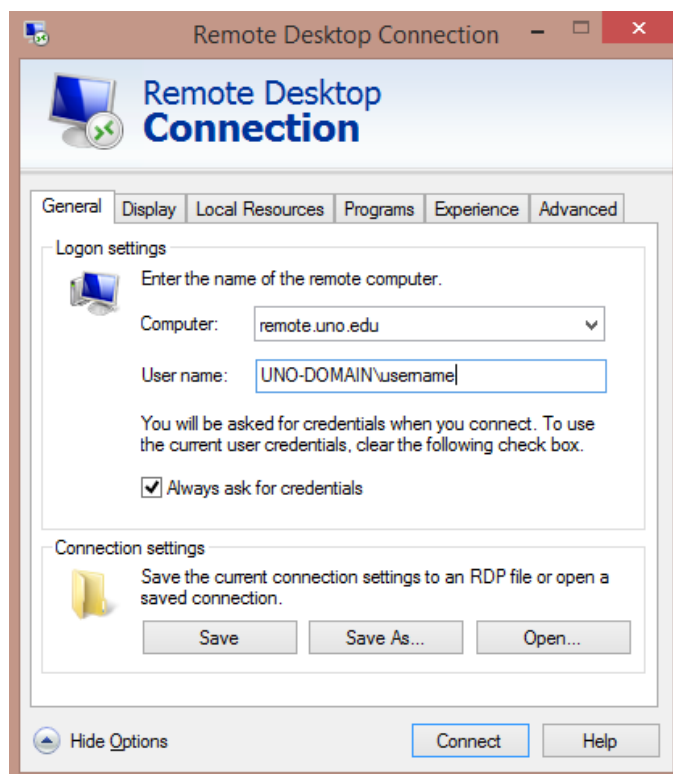
### Connecting to UNO's remote terminal server from a Windows computer.

To connect to our UNO Remote Terminal Server from a Windows computer you will need to use the [Microsoft Remote Desktop application](#) located under the Accessories folder from the Start Menu and have Windows Vista SP 1 or later. Anyone wanting to use Remote Desktop from off-campus should no longer connect via VPN.

1. Double click on the Microsoft Remote Desktop application located under Accessories from the Start menu.



2. Type in "remote.uno.edu" in the computer field as shown in the below picture.
3. Hit connect. We recommend not saving your login credentials but it is an option.



You are now connected and have access to your I:, S:, all of the Office apps plus numerous others.



## Connecting to UNO's remote terminal server from a Mac.

To connect to our UNO Remote Terminal Server from a Mac you will need to use the [Microsoft Remote Desktop application for Mac](#) and have OS 10.7 or later. Anyone wanting to use Remote Desktop from off-campus should no longer connect via VPN.

1. Open the **Microsoft Remote Desktop** application.
2. The icon.
3. Click **New**.
4. For Connection Name, enter **UNO Remote**.
5. For PC Name, enter the name of our UNO Terminal Server – **remote.uno.edu**.
6. Leave the "no gateway configured" as it is.
7. Please do not save your username and password.
8. Close the popup using the red circle in the upper left corner of the window.
9. To open the remote desktop session, double click on **UNO Remote**.
10. If you did not store your username and password, you will be prompted to enter your username and password.

You are now connected and have access to your I:, S:, all of the Office apps plus numerous others.



The icon & below is the configuration page.

