

# UNIVERSITY OF NEW ORLEANS MASTER PLAN

APPENDIX G : LANDSCAPE ASSESSMENT  
SPACKMAN MOSSOP MICHAELS



*UNO Master Plan Plant Palette*

---

LARGE TREES



**SLASH PINE**

*Pinus elliottii*

This evergreen has an attractive, oval-shaped form, thick bark, and shiny, dark green needles. It is often chosen for its fast growth.



**LIVE OAK**

*Quercus virginiana*

Large, spreading trees native to Louisiana, Live Oaks stay green all year and are wonderful for providing shade.



**WILLOW OAK**

*Quercus phellos*

The Willow Oak is desirable for its beauty, shade, and ease of management. It is characterized by its narrow, willow-like leaves.



**NUTTALL OAK**

*Quercus nuttallii*

An excellent, tall shade tree, the Nuttall requires minimal care and produces unique acorns. Its lobed leaves turn red in autumn.



**BALD CYPRESS**

*Taxodium distichum*

The state tree of Louisiana, the Bald Cypress is known for its hardiness and feather-like leaves, which turn a brilliant red in the fall.



**SYCAMORE**

*Platanus occidentalis*

Sycamores are distinguishable by their patterned trunks, the result of peeling bark as trees grow. These trees can grow very large.

SMALL TREES



**SWEETBAY MAGNOLIA**

*Magnolia virginiana*

In addition to their vibrant, waxy leaves, Sweetbays produce creamy-white, fragrant flowers in spring and summer.



**RED MAPLE**

*Acer rubrum var drummondii*

Known for its deep red foliage in the fall and its attractive form, the Red Maple is adaptable to many environmental conditions.



**SOUTHERN MAGNOLIA**

*Magnolia grandiflora*

This tree stands out for its large, creamy white, and fragrant flowers. Its leaves are also beautiful: shiny and slightly red.



**WAX MYRTLE**

*Morella cerifera*

This fast growing, multistem shrub is a good choice for its aromatic foliage, colorful berries, and attractive bark.

*UNO Master Plan Plant Palette: Lakeside*

SHRUBS



**DWARF PALMETTO**

*Sabal minor*

Dwarf Palmetto's are one of only a few palms native to the U.S. and are quite tolerant to the cold. They produce white blooms in spring.



**YAUPON HOLLY**

*Ilex vomitoria*

A durable and adaptable evergreen shrub, the Yaupon is known for the colorful berries of female plants, which can range from yellow to red.



**CABBAGE PALM**

*Sabal palm*

This palm has an elegant look and round canopy of leaves that can reach 6 ft. in length. It is easy to care for once planted.

GRASSES AND PERENNEIALS



**MUHLY GRASS**

*Muhlenbergia capillaris*

These grasses feature a green understory layer which is outgrown by pink-purple flowers that have a feather-like quality.



**COREOPSIS**

*Coreopsis lanceolata*

These low-maintenance flowers grow in upright clumps with bright flowers that attract butterflies and other pollinators.



**SEASIDE GOLDENROD**

*Solidago sempervirens*

Bold and flashy when in bloom, these flowers are accompanied by waxy, fleshy leaves and help retain water in their habitats.

*UNO Master Plan Plant Palette: Lakeside*

LARGE TREES



LIVE OAK

*Quercus virginiana*

Large, spreading trees native to Louisiana. Live Oaks stay green all year and are wonderful for providing shade.



WILLOW OAK

*Quercus phellos*

The Willow Oak is desirable for its beauty, shade, and ease of management. It is characterized by its narrow, willow-like leaves.



NUTTALL OAK

*Quercus nuttallii*

An excellent, tall shade tree, the Nuttall requires minimal care and produces unique acorns. Its lobed leaves turn red in autumn.



BALD CYPRESS

*Taxodium distichum*

The state tree of Louisiana, the Bald Cypress is known for its hardiness and feather-like leaves, which turn a brilliant red in the fall.



SYCAMORE

*Platanus occidentalis*

Sycamores are distinguishable by their patterned trunks, the result of peeling bark as trees grow. These trees can grow very large.

SMALL TREES



SWEETBAY MAGNOLIA

*Magnolia virginiana*

In addition to their vibrant, waxy leaves, Sweetbays produce creamy-white, fragrant flowers in spring and summer.



RED MAPLE

*Acer rubrum var drummondii*

Known for its deep red foliage in the fall and its attractive form, the Red Maple is adaptable to many environmental conditions.

SHRUBS



INDIAN HAWTHORNE

*Raphiolepis indica*

A good choice for coverage, this shrub adds structure to planting areas. As an evergreen, it boasts attractive foliage year-round.

*UNO Master Plan Plant Palette: Mid-Campus*

GRASSES



**MUHLY GRASS**

*Muhlenbergia capillaris*

These grasses feature a green understory layer which is outgrown by pink-purple flowers that have a feather-like quality.



**SWITCH GRASS 'HEAVY METAL'**

*Panicum virgatum 'Heavy Metal'*

This is a durable, upright grass with blue-gray foliage and tan blooms that appear in late summer, giving it a metallic look..

FLOWERING PERENNIALS



**BLACK-EYED SUSANS**

*R. fulgida 'Goldstrum'*

This wildflower blooms from late spring to summer in Louisiana. It is popular with pollinator species as well.



**COREOPSIS**

*Coreopsis lanceolata*

These low-maintenance flowers grow in upright clumps with bright flowers that attract butterflies and other pollinators.

LARGE TREES



**BALD CYPRESS**

*Taxodium distichum*

The state tree of Louisiana, the Bald Cypress is known for its hardiness and feather-like leaves, which turn a brilliant red in the fall.



**SYCAMORE**

*Platanus occidentalis*

Sycamores are distinguishable by their patterned trunks, the result of peeling bark as trees grow. These trees can grow very large.

SMALL TREES



**SWEETBAY MAGNOLIA**

*Magnolia virginiana*

In addition to their vibrant, waxy leaves, Sweetbays produce creamy-white, fragrant flowers in spring and summer.



**RED MAPLE**

*Acer rubrum var drummondii*

Known for its deep red foliage in the fall and its attractive form, the Red Maple is adaptable to many environmental conditions.

SHRUBS



**DWARF PALMETTO**

*Sabal minor*

Dwarf Palmetto's are one of only a few palms native to the U.S. and are quite tolerant to the cold. They produce white blooms in spring.

BIOSWALE PLANTS



**BLUE ARROW JUNCUS**

*Juncus inflexus*

A wetland plant which is also drought tolerant, Blue Arrow enjoys heat and full sun. It has a soft color and grows upright.



**PENNSYLVANIA SEDGE**

*Carex pensylvanica*

A great groundcover for shady areas, this sedge produces small blooms in late spring.



**LOUISIANA IRIS**

*Iris giganticaerulea*

This Iris produces the largest flower of all the Louisiana Iris's, usually blue to lavender to purple in color.

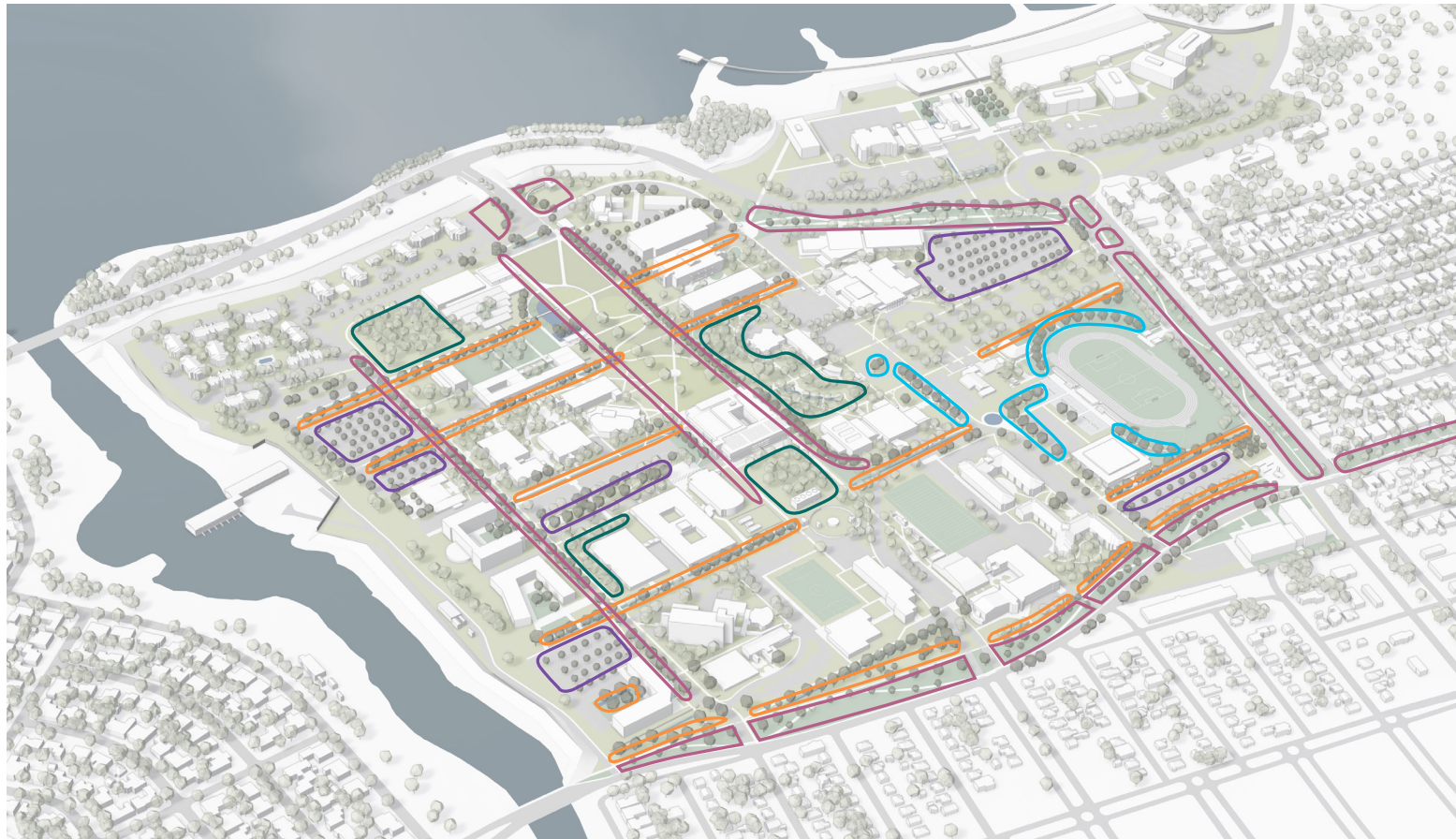


**LOUISIANA IRIS**

*Iris fulva*

Often referred to as the copper iris for its copper colored flowers, this Iris blooms May-June and attracts butterflies.

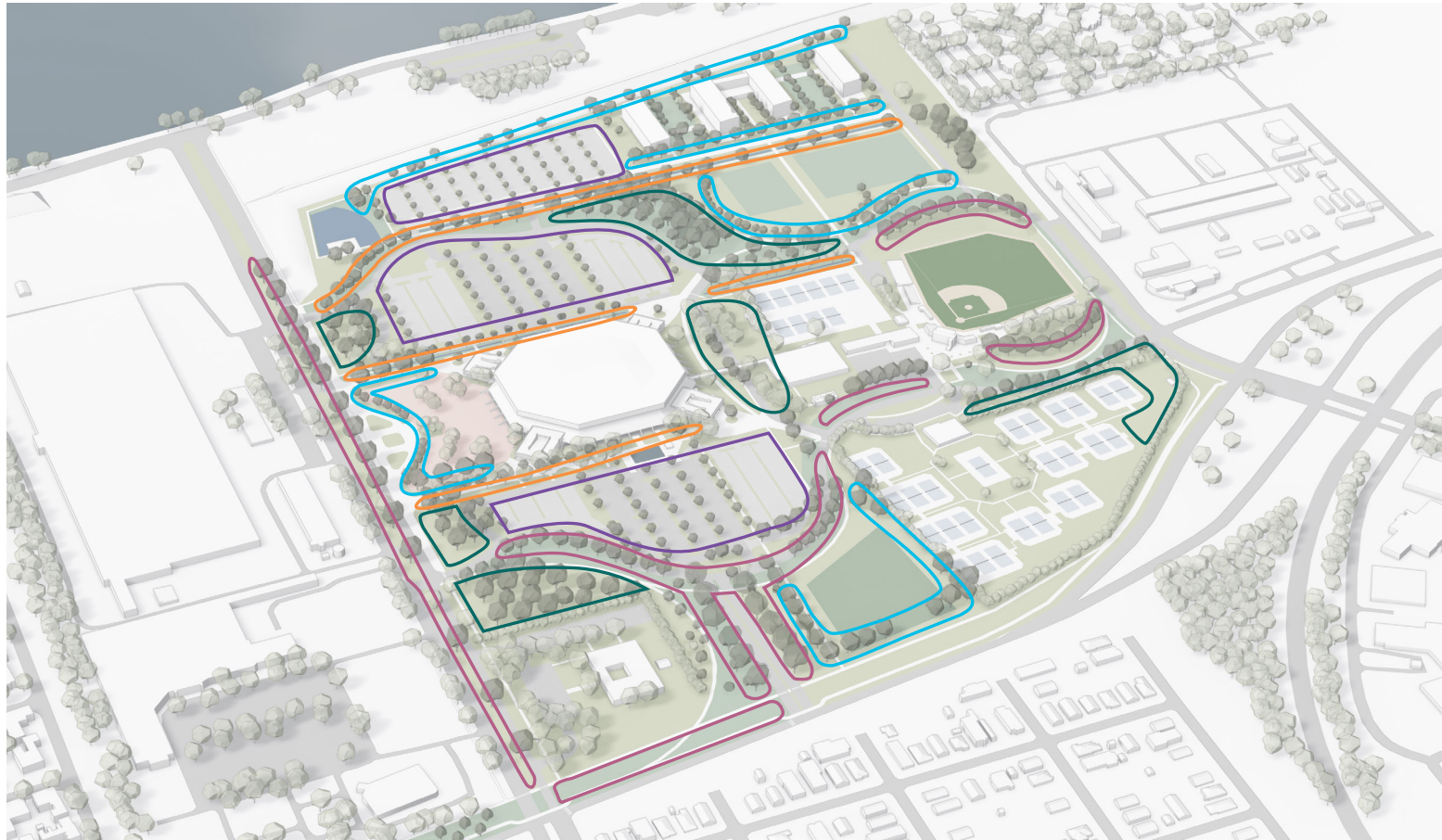
*UNO Master Plan Plant Palette: Urban Wetland*



## MAIN CAMPUS TREE PLANTING

- Bio - diverse Canopy Species:**  
 Nuttall Oak  
 Willow Oak  
 Sycamore  
 Red Maple
  
- Urban Forest:**  
 Slash Pine  
 Willow Oak  
 Nuttall Oak  
 Sweetbay Magnolia  
 Southern  
 Magnolia Wax Myrtle
  
- Bald Cypress**
  
- Live Oak Cluster:**  
 Live Oaks predominant (>75%)  
 Red Maple  
 Sweetbay Magnolia
  
- Mixed Deciduous:**  
 Oak Canopy Trees:  
 Nuttall Oak  
 Willow Oak  
 Overcup Oak ( not in plant list)





### EAST CAMPUS TREE PLANTING

- Bio - diverse Canopy Species:**  
 Nuttall Oak  
 Willow Oak  
 Sycamore  
 Red Maple
  
- Urban Forest:**  
 Slash Pine  
 Willow Oak  
 Nuttall Oak  
 Sweetbay Magnolia  
 Southern  
 Magnolia Wax Myrtle
  
- Bald Cypress**
  
- Live Oak Cluster:**  
 Live Oaks predominant (>75%)  
 Red Maple  
 Sweetbay Magnolia
  
- Mixed Deciduous:**  
 Oak Canopy Trees:  
 Nuttall Oak  
 Willow Oak  
 Overcup Oak ( not in plant list)