

B. F. 17. K002

Author:
Nigel Watkins
sgapresident@uno.edu
8152003169

Organization Contact:
Nigel Watkins
sgapresident@uno.edu

Referred To: _____
Date Filed: _____
Number of Pages Total: _____

Sponsor:
Chance Aucoin
caucoin1@uno.edu
(985) 860-6017

A Bill

This is a bill to allocate \$31,546.50 from the Senate Reserve Account to assist Business Affairs with building a new terrace with sidewalks near the Earl K. Long Library.

Whereas, the proposed Library Terrace improvements will connect the raised, existing library arcade with the library quad. The library entrance was viewed as an ideal location because it is in the heart of campus.

Whereas, this will change how the library will go from being isolated from the campus to becoming the front door of campus life. In addition to new benches and plaza, planting areas will provide the space with a more human-scaled environment, protection from the elements, and a seasonality missing from the characteristically green library quad. New walkways will connect to the central paths leading to the library at a slope consistent with ADA standards so that everyone is invited to the new library terrace.

Whereas, The UNO Master Plan Committee unanimously approved the conceptual plan. This project also has support by the UNO administration, specifically President Nicklow, who has committed his time and funding to see this project through.

Whereas, the allocation will assist Business Affairs in funding the project.

Whereas, the Student Government Association Senate will be recognized with a plaque for the campus enhancement in the heart of the university.

Whereas, the entire UNO community will be able to use the new area by the spring of 2018.

BE IT ENACTED BY THE UNIVERSITY OF NEW ORLEANS STUDENT GOVERNMENT ASSOCIATION THAT:

- I. THE AMOUNT OF \$31, 546.50 BE ALLOCATED FROM THE Senate Reserve Account TO fund the building of a new terrace.
 - II. ALL UNUSED FUNDS SHALL REVERT BACK TO THE STUDENT GOVERNMENT ASSOCIATION AT THE END OF THE CURRENT FISCAL YEAR.
 - III. SEE ATTACHED BUDGET.
 - IV. Business Affairs SHALL REPORT BACK TO THE STUDENT GOVERNMENT ASSOCIATION WITHIN 30 DAYS UPON COMPLETION OF THE PROJECT.
-

Senate Action: Pass

Vote: Y: 12; N: 1; A: 0;

[Signature]

11/28/17

PRESIDING OFFICER'S SIGNATURE

DATE

SGA President's Action: PASS

[Signature]

11/28/17

SGA PRESIDENT'S SIGNATURE

DATE

VETO OVERRIDE

Senate Action on Veto: _____

Vote: _____

PRESIDING OFFICER'S SIGNATURE

DATE

EKL and University Quad Sidewalk & Patio Project

Phase 1 Demolition		EST SQFT	EST COST
Center Barrier Removal *	11.25/sqft for 8" reinforced	946.4	\$10,646.64 ****
Equipment Rental Disposal			
Phase II Site Development	Daily (8hrs)		
Labour **	Labourer \$21.85/hr Finisher \$21.85/hr Foreman \$28/.00/hr Project Manager \$48.00/hr	Labourer \$174.80 Finisher \$174.80 Foreman \$224.00 Project Manager \$384.00	x3 x1 \$39,216.00 Projected @ 6 weeks
Drainage Improvements	SEE Photos 10/02		
Site Prep			
Forming (Materials)			
Subbase Materials	20.00/cuyd	225	1,800.00
Reinforcing Steel			
8' x 20' Mesh	75./sheet	300 lf	1,875.00
Rebar	6.00/rod	75 ea	450
Expansion Joint			750
Highway Mesh	75./ea		225
Equipment Rental ***			
Bobcat			EST \$5000/MTH
Backhoe			
Grader			
Phase III Construction	Daily (8hrs)		
Labour **	Laborer \$19.00/hr Finisher \$28.00/hr Foreman \$35.00/hr	Labourer \$152.00 Finisher \$224.00 Foreman \$280.00	
Cement / Aggregate	120.00/cuyd	2 140.76	\$26,824.24
ADA Compatibility			
Ramps (2) 20'x16.5"x 6'		140	\$4,600.00
Handrails / Wheel Guards			
Bike Racks			
East Side Pad		164.84	\$2,064.42
West Side Pad		228.54	\$2,863.61
5 Cap Loop (SNG3-5)			\$1,210.00
Decorative Benches			
Paver/Brick Patio	30.00/sqft	1010	\$30,300.00

NOTES:

Est. Project Cost w/ Labour \$127,824.91

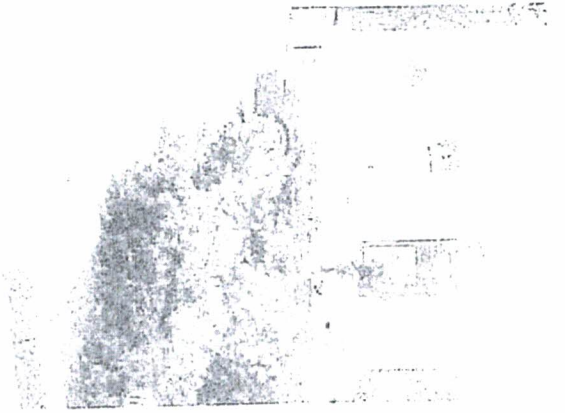
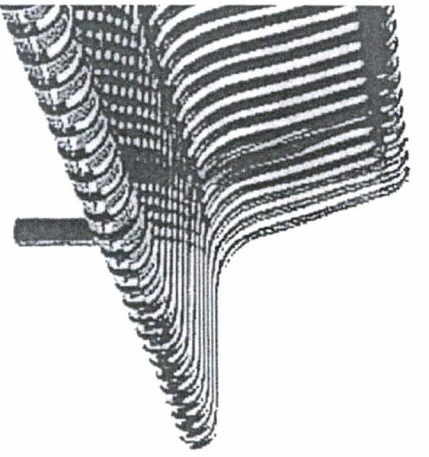
* Price listed is for 8" reinforced concrete - See Sheets A-2A - S-2 (1984)

** Labour Rates are Straight Time only (circa 2015)

*** Equipment Rental Rates vary and need to be quoted separately

**** Estimated off of SQ Footage only

Equipment Rental needs to be quoted separately and the low cost included in the total price. Monthly rental estimated



RETURN TO STANDARD VIEW

-6 can be used as a straight
right or curved NRB bench
rved sections (inside- and
sed in conjunction with
esign latitude for square
nfigurations.

r 2.4 m) length. Custom

FEATURES

.25 x 1.5 in (6 x 38 mm) Bars

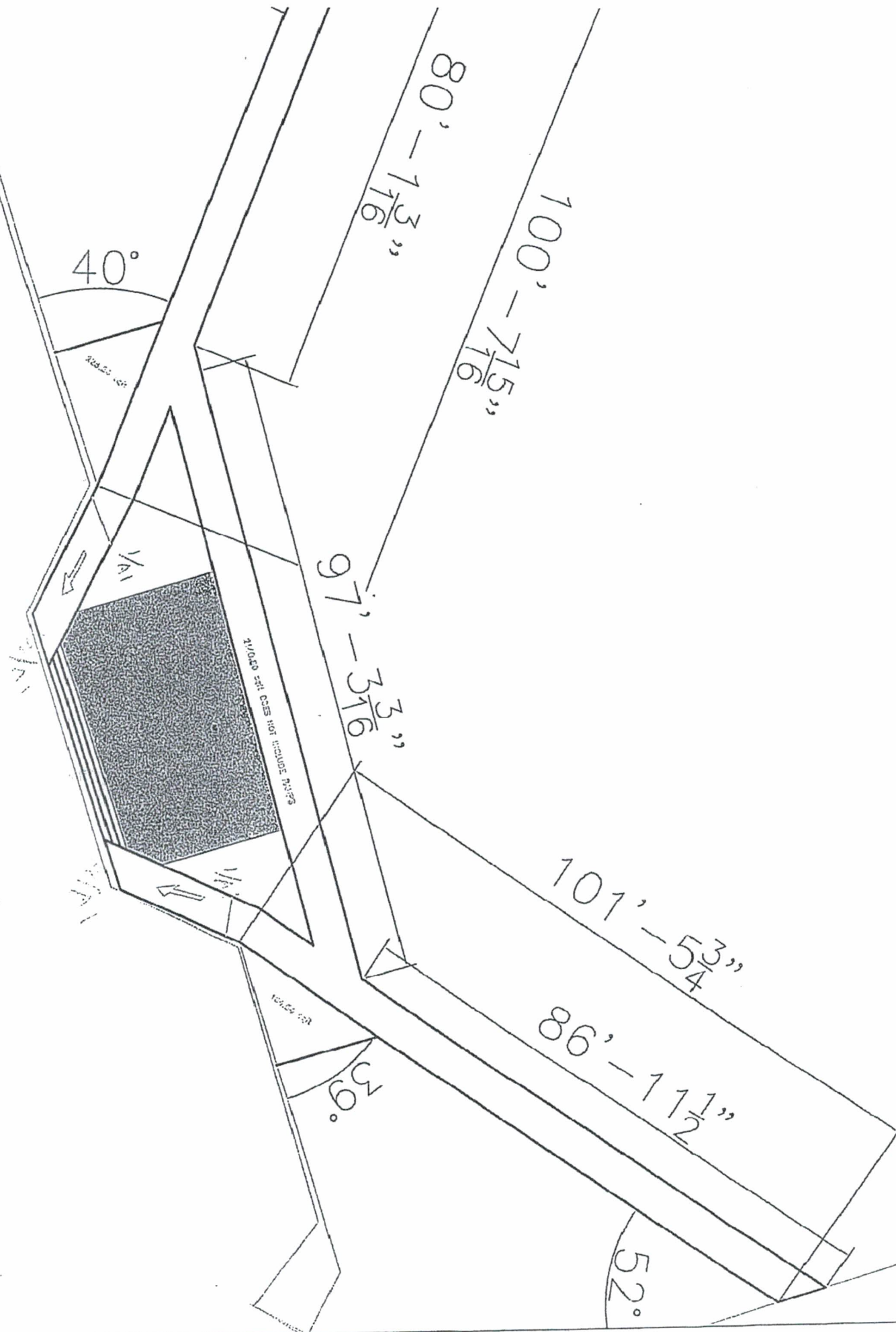
Modular Seating

MATERIAL

Recycled Solid Steel Bar

il shotblasted, elched,
ally powder-coated with

SCALE



40°

80' - 1 3/16"

100' - 7 15/16"

97' - 3 3/16"

101' - 5 3/4"

86' - 1 1/2"

39°

52°

1/16" SEE DETAIL P. 105

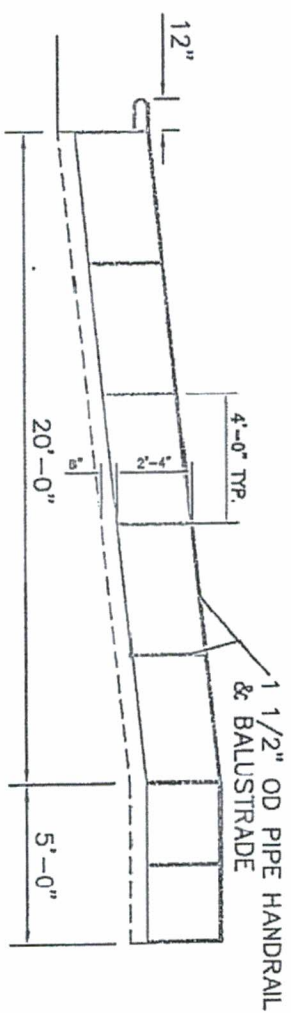
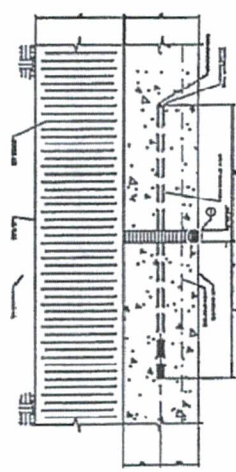
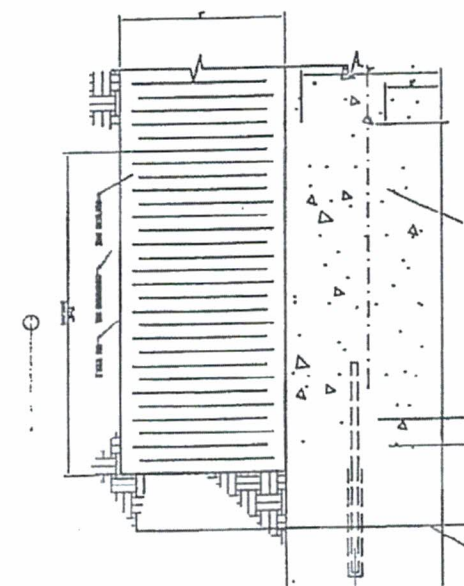
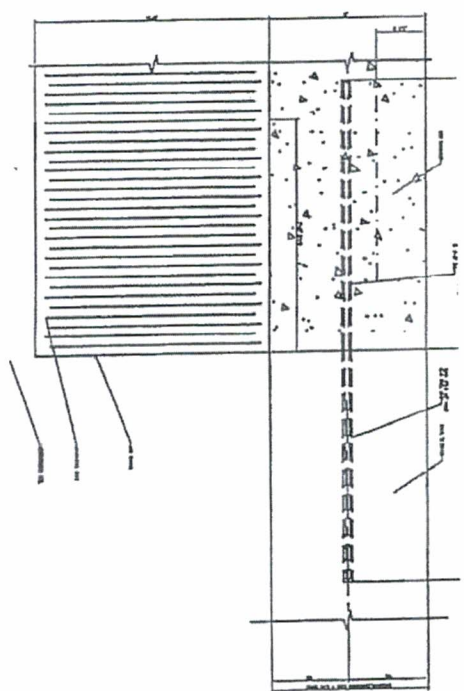
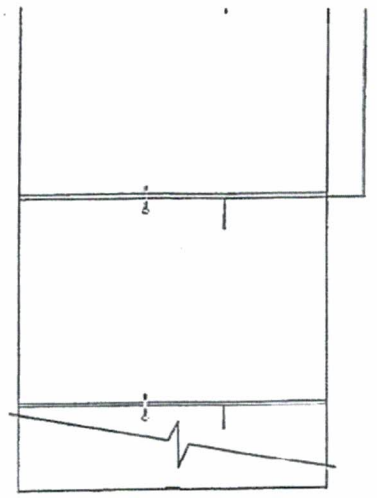
1/4"

1/4"

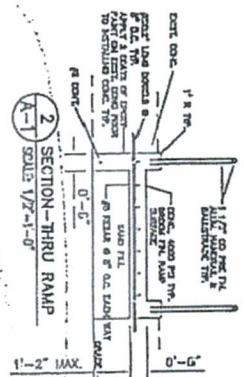
1/4"

1/4"

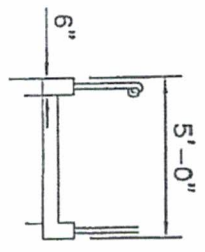
1/4"



1 ELEVATION
A-1 SCALE: 1/4"=1'-0"



3 SECTION-TYPICAL RAMP
A-1 SCALE: 1/4"=1'-0"



NO.	REVISION



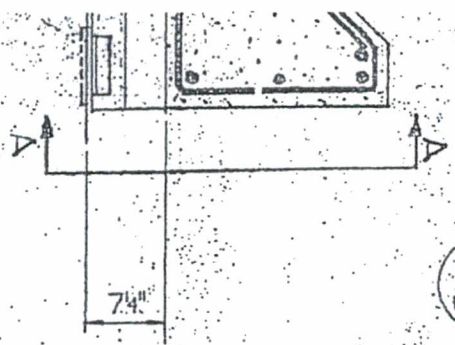
PROJECT TITLE
LIBRARY &
and PA
New Office
5

DRAWING TITLE

Concrete Flat

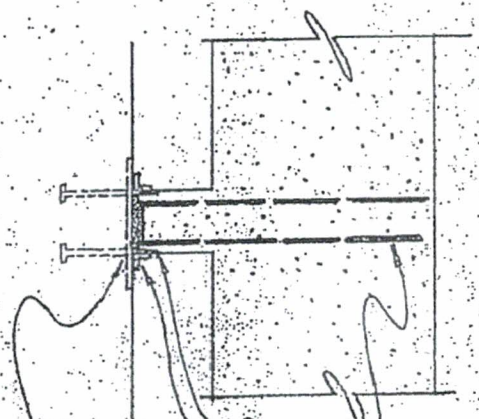


5
S.2



SECTION

VIEW A-A



5-#4 U (GRADE 40)
WELD TO C6x8.2 (GALV)

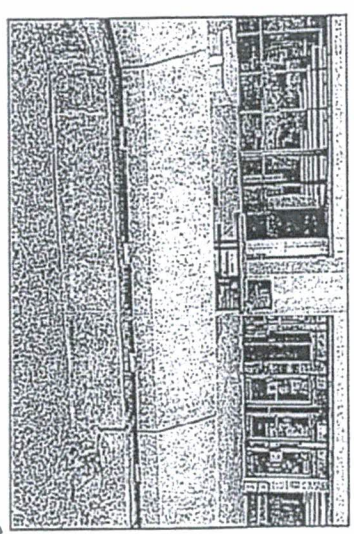
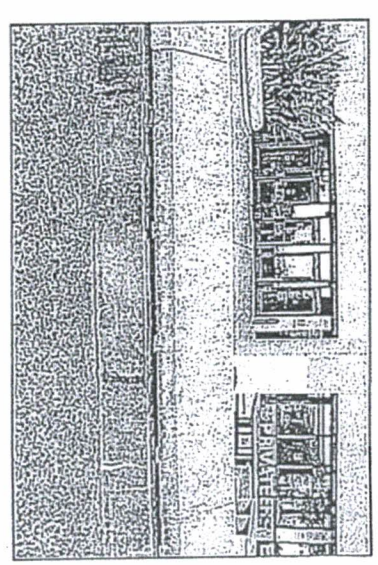
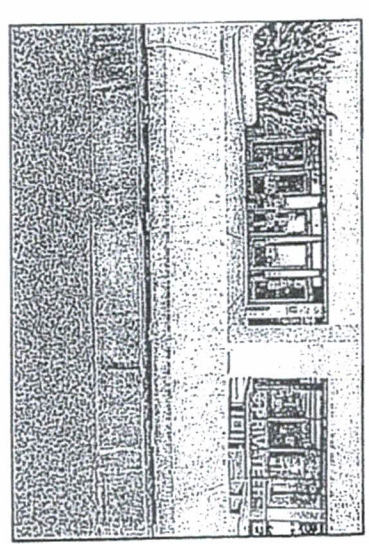
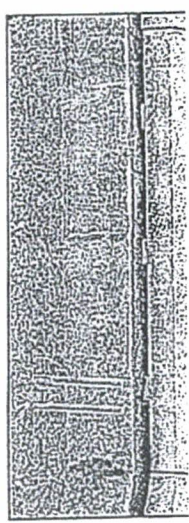
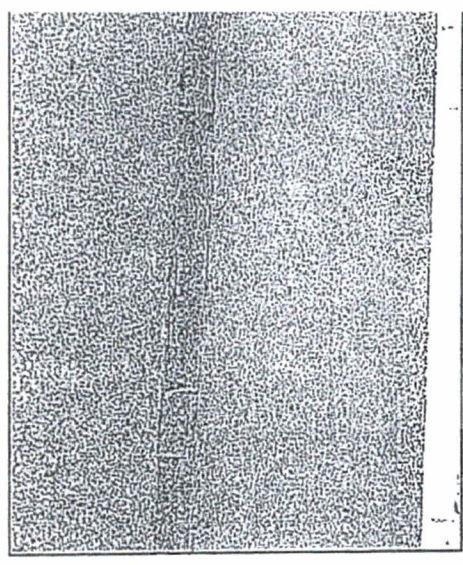
C6x8.2 (GALV)

L 1/2 x 12 x 1/4 x 0.6
(GALV) WELD TO R. 4
TO C6x8.2

R. 1/2 x 13 x 0.5
(GALV) W/2
1/2" φ x 0.6"

AUTOMATIC
END WELDED
SHEAR CONNECTOR

VARIES



PROJECT TITLE	
LIBRARY and	
DECORATIVE	
DRAWING TITLE	
New	
NO.	REVISION